



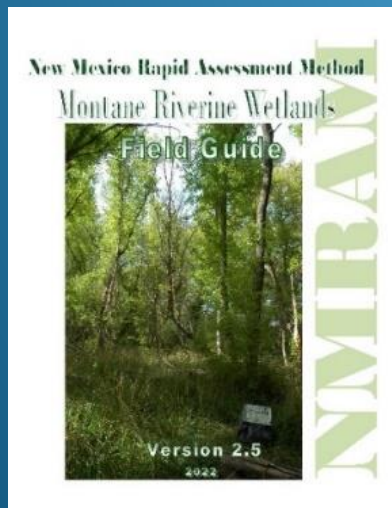
New Mexico Environment Department



New Mexico Rapid Assessment Method (NMRAM)

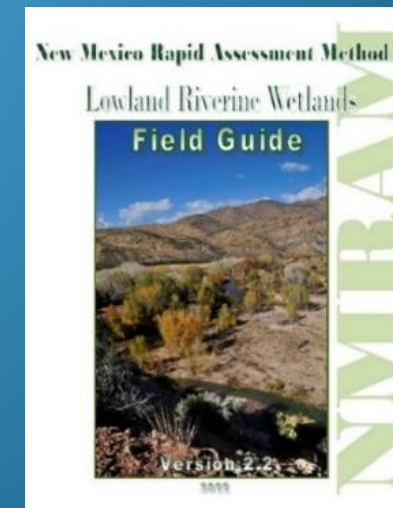
Riverine Wetlands

Invasive Exotic Plant Species Cover



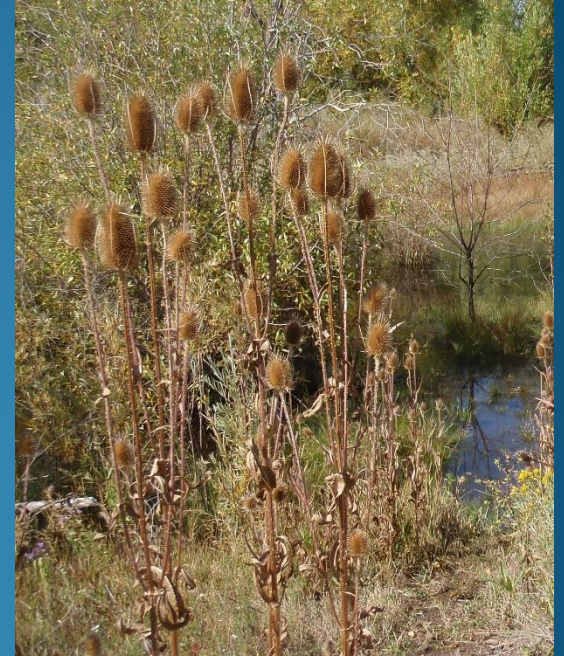
**New Mexico Environment Department
Surface Water Quality Bureau
Wetlands Program**

**Natural Heritage New Mexico
University of New Mexico**



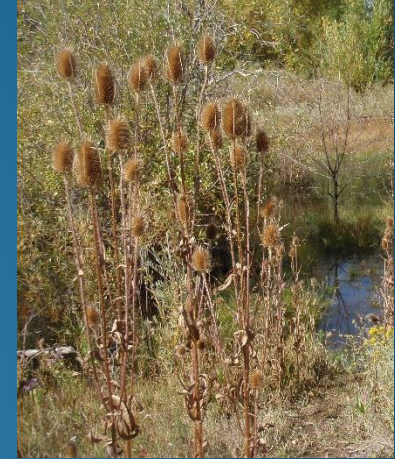
INVASIVE EXOTIC PLANT SPECIES COVER

- **Definition:** Invasive Exotic Plant Species Cover is a measure of the total percent cover of invasive plant species that are Class A through Class C on the New Mexico list of noxious weeds (NMDA 2020 (Appendix D))
- **Rationale:** Invasive, non-native species can have a significant impact on community diversity and function
 - High levels of invasive exotic species are a threat to:
 - Maintaining wetland function
 - Biodiversity
 - Invasive exotic species tend to thrive in riparian systems when natural hydrologic and geomorphic functions have been disturbed



INVASIVE EXOTIC PLANT SPECIES COVER

- List all invasive exotic plant species encountered during walk through
- Note on polygon data sheet (Worksheet 5) rough estimate of invasive exotic species cover
- After reconnaissance estimate total Invasive Exotic Plant Species cover - keep ratings table in mind



Biotic Metrics

Worksheet 5. Vegetation Community Patch Polygon Data for Biotic Metrics B3, B4, and B5 for Polygons from SA number assigned from the SA Biotic Map. Each polygon is evaluated with respect to Vegetation Vertical Structure (B3) Species Cover (B5) metrics. Enter the Vertical Structure Type (VST) for B3, tree regeneration % cover within the polygon the Tables in Appendix B and the Field Guide for metric instructions. Enter the species codes for the invasive exotic species (Appendix D). Use the comments box for documenting and describing vegetation community patch features.

Polygon No	B3 Vertical Structure Type	B4 Tree Regeneration % Cover	B5 Invasive Exotic Species % Cover	Invasive Exotic Species (List Code(s))	Comments
1	VST 2	1	0		
2	VST 6W	0	0.5	CIAR4, CIVU	
3	VST 5	0	0.5	CIVU, CIAR4	De
4	VST 5	0	0.5	CIVU, CIAR4	
5	VST 5	0	1	CIVU, CIAR4	De
6	VST 6S	0	7	CIAR4, CIVU	Multi
7	VST 5	0	0.5	CIVU, CIAR4	
8					

B5 - Invasive Exotic Plant Species Cover

Worksheet 9. Based on Worksheets 5 and 6, calculate or estimate the percentage cover of invasive exotic species for the SA and enter below. Rate using Table B5 and enter the rating on the SA Rank Summary Worksheet.

Rating Method

Invasive cover (%)

0.5

calculate

Table B5. Ratings for Invasive Exotic Plant Species Cover

Rating	Invasive Species Cover %
<input type="radio"/> 4	0%
<input checked="" type="radio"/> 3	>0% - <1%
<input type="radio"/> 2	≥1% - <10%
<input type="radio"/> 1	≥10

